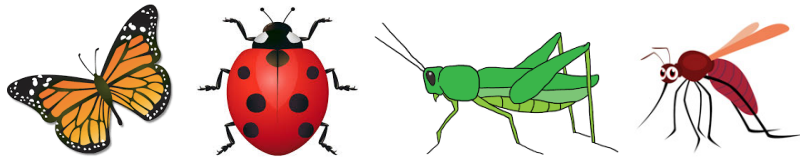
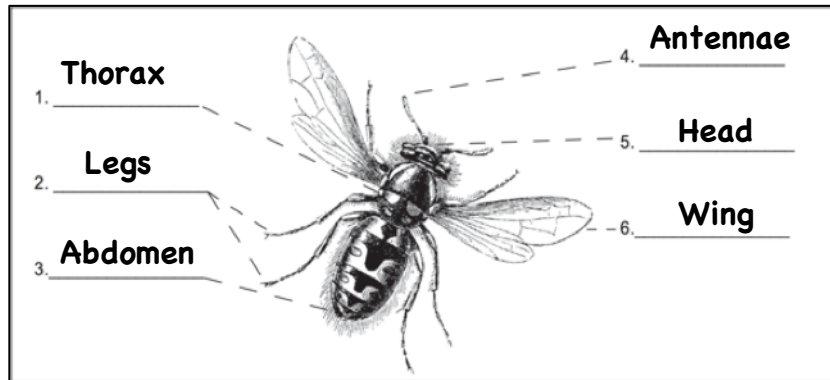


# Answer Key

## Insect Investigation

Use the word bank below to label the different body parts of an insect. Look back at your instruction sheet if you need help.



Want to learn more about insects?  
Check out these websites:

- <https://kids.nationalgeographic.com/animals/invertebrates/insects/>
- <https://www.natgeokids.com/uk/discover/animals/insects/15-facts-about-bugs/>

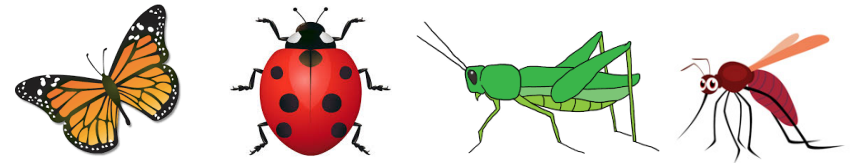
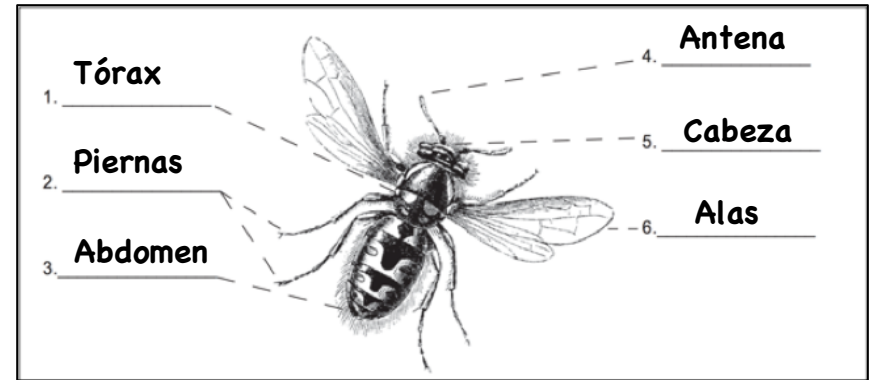


**OUTDOOR  
EXPLORE!**  
Nature Discovery Kits

# Clave de Respuesta

## Investigación de insectos

Usa el banco de palabras para etiquetar las diferentes partes del cuerpo de un insecto. Revise su hoja de instrucciones si necesita ayuda.



¿Quiere aprender más sobre los insectos?  
Visite estos sitios web:

- <https://kids.nationalgeographic.com/animals/invertebrates/insects/>
- <https://www.natgeokids.com/uk/discover/animals/insects/15-facts-about-bugs/>



**OUTDOOR  
EXPLORE!**  
Nature Discovery Kits